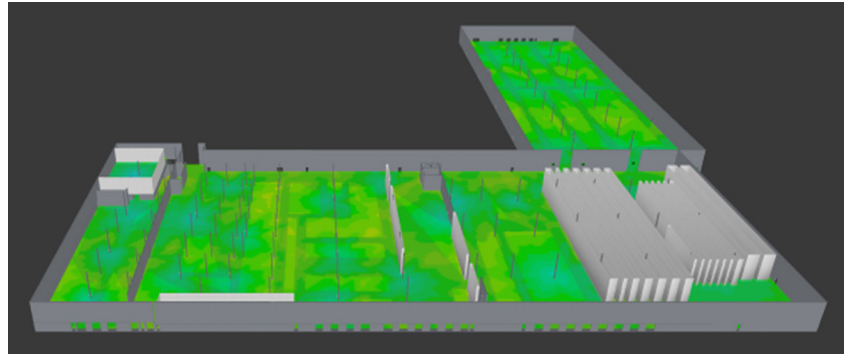


RUCKUS® Global Manufacturing, Warehouse and Logistics Services

Offered by RUCKUS Professional Services

BENEFITS

- **Enhance Productivity & Efficiency**
Optimize network design to support automation, IoT, and real-time monitoring, minimizing downtime and maximizing operational efficiency.
- **Seamless Connectivity**
Ensure reliable, high-performance wireless connections across complex environments with variable layouts and challenging structures.
- **Scalable & Future-Proof**
Deploy adaptable, scalable solutions that evolve with your facility's growth and technological advancements, including support for IoT and Industry 4.0 innovations.
- **Comprehensive Security**
Implement robust security measures, including network segmentation, encryption, and proactive monitoring to safeguard sensitive data and operations.
- **Tailored Solutions for MWL Challenges**
Overcome RF design obstacles such as metal structures, varying ceiling heights, and dynamic environments with expert network planning and implementation.
- **Reduced Operational Burden**
Free up internal resources by leveraging RUCKUS Professional Services for network management, installation, and performance optimization.



ENHANCING NETWORK EFFICIENCY IN HIGH-DEMAND INDUSTRIAL ENVIRONMENTS

As manufacturing facilities, warehouses, and logistics hubs become more automated and rely on connected devices, the demand for high-capacity and high-performance networks increases, leading to greater pressure on infrastructure. In environments where machinery, IoT devices, and automated systems operate, specific design and implementation strategies are necessary to meet the performance demands of these high-traffic areas.

As a network administrator in the manufacturing and logistics industry, you face the challenge of maintaining a reliable, high-performing network that supports automation, monitoring systems, and communication tools. To ensure seamless operations and productivity, you and your team need to address critical areas such as:

1. Supporting high-density devices (multiple IoT and automated systems).
2. Ensuring uninterrupted network performance in warehouses and production floors.
3. Guaranteeing coverage across large facilities and multiple locations.
4. Managing bandwidth and prioritizing critical machine-to-machine (M2M) traffic.
5. Implementing strong security measures to protect sensitive data and systems.

Managing these priorities while keeping the network simple and scalable for future growth is no small feat. With RUCKUS Professional Services, we provide the specialized expertise to help you overcome these challenges efficiently.

SOLVING YOUR MANUFACTURING AND LOGISTICS NETWORK CHALLENGES

RUCKUS Professional Services understands the critical challenges faced by network administrators in manufacturing, warehousing, and logistics. We address the most pressing concerns:

- **Overloaded Networks:** We ensure your network can handle the growing number of connected devices and systems without slowing down or causing disruptions.
- **Performance in High-Density Areas:** Our services guarantee consistent, reliable network performance in production lines, storage areas, and shipping docks, even during peak times.
- **Facility-Wide Coverage Gaps:** We eliminate coverage gaps, ensuring seamless connectivity throughout your entire facility, including remote or hard-to-reach areas.
- **Bandwidth and Traffic Optimization:** We prioritize essential traffic and manage bandwidth to support critical operations, such as automation, inventory management, and communication systems.
- **Security and Access Control:** We safeguard your network with robust security and access controls to protect proprietary data and prevent unauthorized access, reducing risks and ensuring compliance with industry standards.

With our extensive expertise, RUCKUS Professional Services simplifies network management while ensuring long-term performance, scalability, and operational success in your manufacturing, warehousing, and logistics environments.

MAXIMIZING INVESTMENTS

To help optimize technology investments, RUCKUS and its partners provide complete solutions that include education, support, and services tailored to the needs of the hospitality sector. Contact your RUCKUS sales partner to learn more about RUCKUS Services for Service Providers or visit <https://www.ruckusnetworks.com>

FIND OUT MORE

For more information about RUCKUS Professional Services, contact your RUCKUS Account Manager or Systems Engineer. Visit us at <https://www.ruckusnetworks.com/professional-services>, or email us directly: ruckusproservices@commscope.com

www.ruckusnetworks.com

Visit our website or contact your local RUCKUS representative for more information.

© 2024 CommScope, LLC. All rights reserved.

CommScope and the CommScope logo are registered trademarks of CommScope and/or its affiliates in the U.S. and other countries. For additional trademark information, see <https://www.commscope.com/trademarks>. All product names, trademarks and registered trademarks are property of their respective owners.

RUCKUS[®]
COMMSCOPE